

LS

LS-series is a line of efficient LED products suitable for industrial and other applications in various environments. Typical applications are engineering, industry and vehicles.

LED-technology delivers low energy consumption and long service life as well as high vibration durability and virtually no radiated heat from the light beam.

The lamp design has been a favourite in the industry for decades. It can be supplied with an external plugin transformer for 230V. The transformers protection class is IP44.

Customized versions are available upon request.

Features include

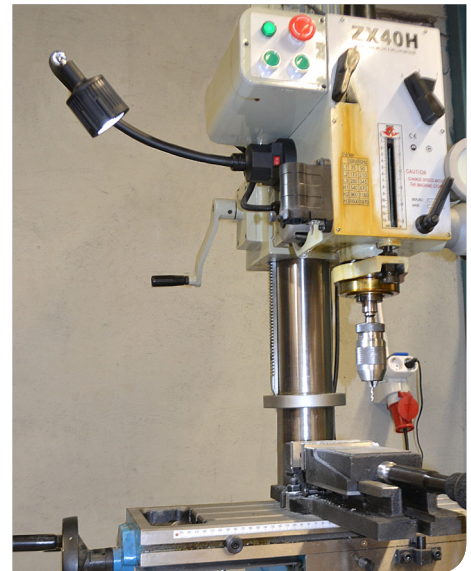
- Arm length 50/70cm with or without swivel joint, spotlight
- LED Service life > 25.000h
- 12-24V AC/DC
- AC/DC-Adaptor 100-240/12V, IP44 available as accessory

Applications

- Industrial applications
- Vehicles
- Reading light

Benefits

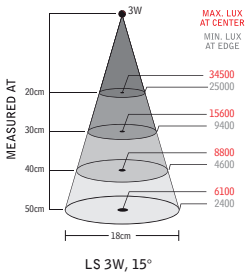
- Long service life
- High quality components
- Rugged flexible arm
- Durable design



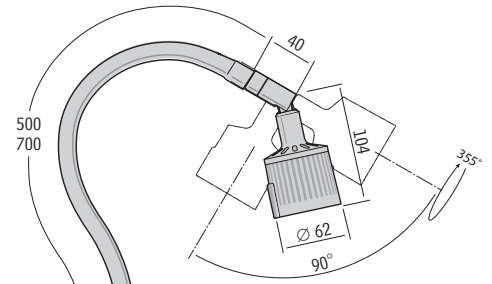


Technical specifications

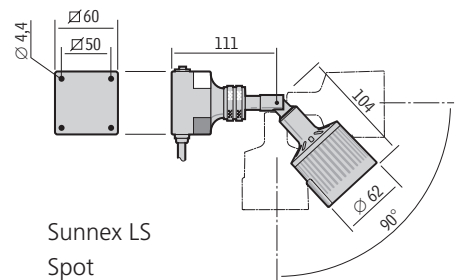
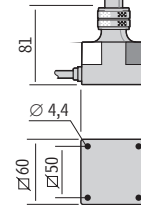
Input	12-24V AC/DC, 2m cordset (100-240VAC Plugin AC/DC-adaptor available, IP44)
Power consumption	3W
Arm length	500, 700 mm or spot
Colour	Black
Colour temperature	5500K
IP rating	IP20
Protection class	Class III
Beam angle	15°
Light output	165Lm, 6100Lx at 500mm distance
Colour rendering index	CRI: 80
Weight	
Life span	>25.000h



Model	Arm	Connection	Other	Part no.
LS-Flex	500 mm	12-24V AC/DC		30305
			Joint	30320
	700 mm	12-24V AC/DC		30310
LS-Spot	40 mm	12-24V AC/DC	Joint	30325
			Single joint	30330



Sunnex LS
Gooseneck arm



Sunnex LS
Spot

PSU (100-240V~)



Plug-in Adaptor for Europe 230V
33901

Mounting Accessories



Magnetic base
14000

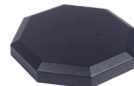


Table base
14015



C-Clamp
14020



Wall mount
14030

More info about
Accessories
see separate leaflet
www.sunnex.se